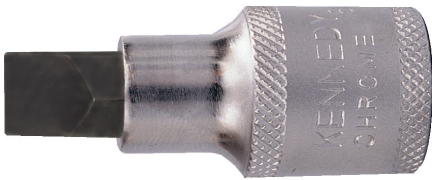


Yamoto - 1/2 inch Drive, 9mm Screwdriver Socket Bits



For insertion and removal of fasteners and fixings using 1/2 square drive tooling. Made from chrome vanadium steel, fully chrome plated with a mirror finish and aluminium-free. All have ball retaining groove on each face of the square drive. Conform to DIN standards.

Specifications	Details
Product Number	YMT5827809GTSK
Brand	Yamoto
Socket Depth	Standard
Drive Size	1/2 inch
Socket Type	Socket Bit
Bit Length	20mm
Overall Length	55mm
Material	Chrome Vanadium Steel
Drive Type	Square
Bit Type	Slotted
Socket Size	9mm