

Order Code	Description
<input checked="" type="checkbox"/> UTGM1	PosiTector Standard with UTG M Probe
<input type="checkbox"/> UTGM3	PosiTector Advanced with UTG M Probe

## PosiTector<sup>®</sup> UTG Ultrasonic Thickness Gage

## Compare PosiTector Gage Bodies

Features	Standard	Advanced
HiLo alarm — Audibly and visibly alerts when measurements exceed your specified limits	●	●
Min Scan mode — take continuous readings and record min/max thicknesses — ideal for quick inspection over a large area	●	●
A Scan - with adjustable Gain with screen capture for further analysis and documentation		●
B Scan - display in which a cross sectional profile of the test material is represented		●
Graphics readout for detailed analysis of the coating system		●
Statistics Mode — Instantly calculate average, standard deviation, min/max thickness and number of readings while measuring	●	●
Two year warranty on body AND probe	●	●
Reading Storage Capacity	250 per probe	100,000 in up to 1,000 batches
Onscreen Batch Annotation — Add notes, change batch names and more with built-in QWERTY keyboard		●
Multiple stored calibration adjustments for measuring on a variety of substrate conditions		●
<b>Connection Options</b>		
Sealed USB port for fast, simple connection to a PC and to supply continuous power. USB cable included.	●	●
<b>Bluetooth 4.0 technology</b> for data transfer to a mobile device running the PosiTector App or optional portable printer. <b>BLE API</b> available for integration into third-party software.		●
WiFi technology wirelessly synchronizes with PosiSoft.net and downloads software updates		●



PosiTector UTGM1

Removeable Cabled Probe	Probe Model UTG M	
	<b>Probe Type:</b>	5 MHz Dual Contact
	<b>Thru-Paint Capability:</b>	Yes
	<b>*Measurement Range - Single Echo:</b>	0.100" to 5.000" 2.50 to 125.00 mm
	<b>*Measurement Range - Multiple Echo:</b>	0.100" to 2.500" 2.50 to 60.00 mm
	<b>Resolution:</b>	0.001" 0.01 mm
	<b>*Accuracy:</b>	±0.001" ±0.03 mm

\*Measurement range is for carbon steel and depends upon surface condition, temperature and material.

UTG M Probe features Thru-Paint capability to quickly and accurately measure the metal thickness of a painted structure without having to remove the coating. Also ideal for measuring applications requiring a more durable wear face.

- 5 MHz contact probe with wear resistant alumina probe tip
- Multiple-Echo technique averages 3 or more echoes for accurate and reliable readings
- Toggle easily between Single and Multiple Echo modes (Visit [www.defelsko.com/echo-modes](http://www.defelsko.com/echo-modes))

Order Code	Description
<input checked="" type="checkbox"/> UTGM1	PosiTector Standard with UTG M Probe
<input type="checkbox"/> UTGM3	PosiTector Advanced with UTG M Probe

### All Gages Feature...

#### Simple

- Pre-programmed velocities – Simply select from a list of common materials or enter your own with ease
- SmartCouple™ – Eliminates inadvertent decoupling - ideal for analyzing large areas using multiple passes
- Enhanced one-handed menu navigation
- RESET feature instantly restores factory settings

#### Durable

- Solvent, acid, oil, water and dust resistant — weatherproof
- Shock-absorbing, protective rubber holster with belt clip
- Two year warranty on gage body AND probe

#### Accurate

- Precision ultrasonic transducers provide fast, accurate readings
- Certificate of Calibration showing traceability to NIST included (Long Form)
- Conforms to national and international standards including ASTM E797
- Built-in temperature compensation ensures measurement accuracy

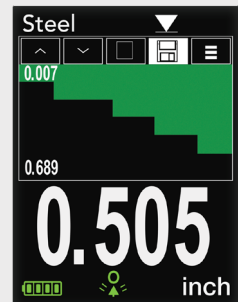
#### Versatile

- High Contrast LCD with backlit display
- Single or two point adjustment
- Inch/mm switchable
- Selectable display languages
- Flip display enables right-side-up viewing
- Uses alkaline or rechargeable batteries (built-in charger)



#### Powerful

- Min Scan — take continuous readings and record min/max thicknesses – ideal for quick inspection over a larger area
- Statistics mode continually displays/updates average, standard deviation, min/max thickness and number of readings while measuring
- HiLo alarm audibly and visibly alerts when measurements exceed user-specified limits
- Screen Capture — save screen images for record keeping and review
- Sealed USB port for fast, simple connection to a PC and to supply continuous power. USB cable included.
- Software updates via web keep your gage current
- Every stored measurement is date and time stamped
- Software Solutions for viewing, analyzing & reporting data. See page 3 for a complete overview of these options.



**Advanced Models Feature A-Scan & B-Scan**

**A-Scan** with adjustable Gain and screen capture. UTG M and UTG P probes include dual cursors to measure the distance between echoes.

**B-Scan**—displays a cross sectional profile of the test material (*shown on left*)



**Award Winning Compatibility!**

PosiTector body accepts all PosiTector 6000, 200, RTR, SPG, DPM, SST, SHD and UTG probes easily converting from a coating thickness gage to a surface profile gage, dew point meter, soluble salt tester, Shore hardness durometer or ultrasonic wall thickness gage.



**Comes complete** with PosiTector gage body, UTG M probe, couplant (ultrasonic gel), protective rubber holster with belt clip, wrist strap, 3 AAA alkaline batteries, instructions, protective lens shield, convenient carrying case, Long Form Certificate of Calibration traceable to NIST or PTB, USB cable, PosiSoft Software, two (2) year warranty.

**SIZE:** 146 x 61 x 28 mm (5.75" x 2.4" x 1.1")

**BODY WEIGHT:** 140 g (4.9 oz.) without batteries

**CONFORMS TO:** ASTM E797

# PosiSoft® Suite of Software

Four FREE and unique ways to view and report your PosiTector and PosiTest data

## PosiSoft Desktop — PC/Mac

Powerful desktop software for downloading, viewing, printing and archiving measurement data. No internet connection required.

- Import readings directly from the gage via USB or from legacy PosiSoft desktop versions
- Synchronize measurement data including readings, notes and pictures to and from PosiSoft.net
- Import/Export Templates and Jobs to share with other users
- Import PDF forms and overlay **Custom Fields** for automatic population of inspection and measurement data
- Report preview automatically refreshes as changes are made



### Prompted Batch Mode

Create pre-defined batches with onscreen text and image prompts for each reading and upload to PosiTector 6000 gages (*Advanced models only*).

- Ideal for ensuring a consistent measurement pattern for repetitive jobs or when specific measurement locations are required
- Create and store multiple templates for different jobs



## PosiSoft.net — Web-based

A web-based application offering secure centralized management of readings. Access your data from any web-connected device.

- Synchronize data when connected via USB or WiFi
- Synchronize measurement data including readings, notes and pictures with PosiSoft Desktop and PosiTector App
- Securely store measurement data in the cloud and share with authorized users via a secure login



Jobs Batches Readings

## PosiTector App — Mobile

Mobile app connects PosiTector Advanced instruments, the PosiTector SmartLink and the PosiTest AT-A to your *iOS* or *Android* smart device.

- Auto pairing Bluetooth BLE connection
- Automatically generate user-formatted reports and share via email, text, cloud storage services like Dropbox, and more
- Export readings to PosiSoft Desktop or synchronize readings to and from PosiSoft.net for further reporting and archival options

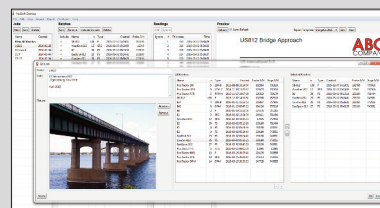
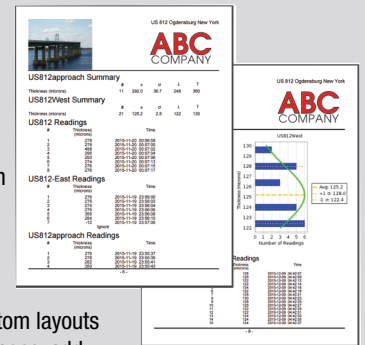


## PosiSoft Custom PDF Report Generator

Easily create reports from your measurement data in seconds.

featured on  
PosiSoft Desktop  
PosiSoft.net  
PosiTector App

- Include inspection information such as on-site pictures, screen captures, notes and more to communicate important details
- Create and save multiple custom layouts as templates – insert cover pages, add logos/images, and select font and point size
- Select the information to include for each product type – charts, histograms, readings, time stamps and more
- Compile multi-batch reports from one or more probes and instrument types
- Export readings as comma separated value (.CSV) files which can easily be imported into Excel and other supporting applications



**Jobs** feature consolidates batches into groups to keep measurement data organized and to quickly create multi-batch reports (not available on PosiTector App)

## PosiSoft USB Drive — Gage Based



A simple gage interface to retrieve data in a manner similar to USB flash drives, cameras, or digital audio players. No software to install or internet connection required.

- View and print readings and graphs using universal PC/Mac web browsers and file explorers
- Measurement data can be printed quickly from a formatted HTML report or exported in .CSV format for further analysis in spreadsheets
- Simple file management - Copy and paste measurement data from the PosiTector to a local folder on your computer, network folder or cloud drive
- Access stored screen captures (snapshots) of the PosiTector display



PosiTector and PosiTest AT-A instruments can integrate with third-party software, drones, ROVs, PLCs, and robotic devices using several industry-standard communication protocols.

## PosiTector Developer Resources

including Bluetooth 4.0, WiFi, USB Keyboard, and USB Serial

**DeFelsko®**  
The Measure of Quality

DeFelsko Corporation • 800 Proctor Ave. • Ogdensburg, New York 13669-2205 USA  
Toll Free 1-800-448-3835 • Tel: +1-315-393-4450 • Fax: +1-315-393-8471  
techsale@defelsko.com • www.defelsko.com

